



Beaufort County
Public Works
Stormwater Infrastructure
Project Summary

Project Summary: Zehm Lane

Activity: Routine/Preventive Maintenance

Narrative Description of Project:

Completion: Dec-13

Replaced (1) access gate.

2014-554 / Zehm Lane 2014-554	Labor Hours	Labor Cost	Equipment Cost	Material Cost	Contractor Cost	Indirect Labor	Total Cost
AGREP / Access Gate - Replaced	15.0	\$355.10	\$18.10	\$126.84	\$0.00	\$243.15	\$743.19
AUDIT / Audit Project	0.5	\$10.23	\$0.00	\$0.00	\$0.00	\$6.62	\$16.85
2014-554 / Zehm Lane 2014-554 Sub Total	15.5	\$365.33	\$18.10	\$126.84	\$0.00	\$249.77	\$760.04
Grand Total	15.5	\$365.33	\$18.10	\$126.84	\$0.00	\$249.77	\$760.04

(Pictures Not Available)

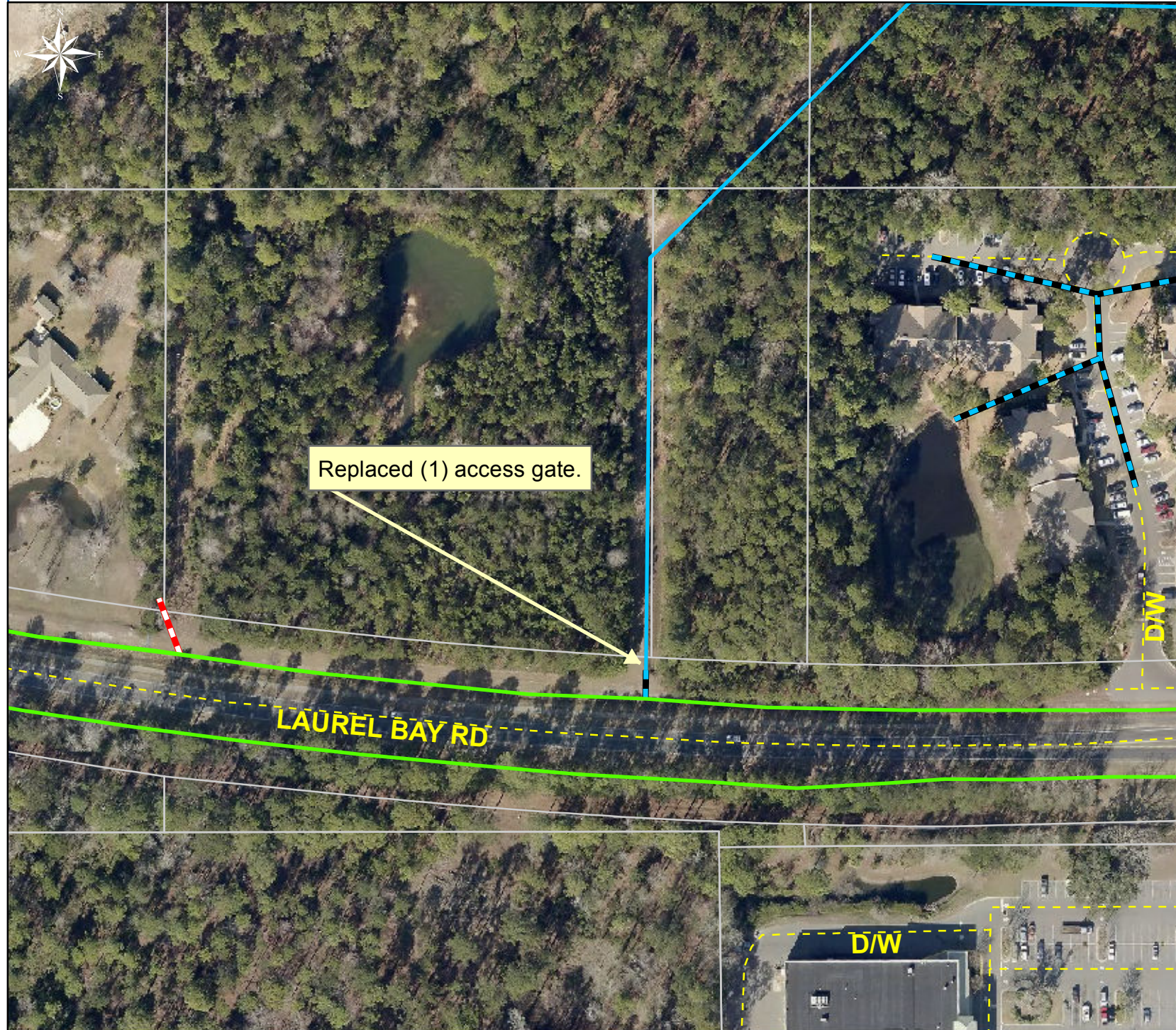
Project: Zehm Lane

**Activity: Routine/
Preventive
Maintenance**

**Project #:
2014-554**

**Township: Port
Royal Island**

**Completed:
December 2013**



Replaced (1) access gate.

LAUREL BAY RD

D/W

D/W

Legend

TYPE

- River
- Creek/Stream
- River/Creek/Marsh BANK
- Channel (fka Outfall)
- Channel Pipe
- Lateral
- Lateral Pipe
- Roadside
- Roadside Pipe
- Road Pipe
- Crossline Pipe
- Driveway Pipe
- Access Pipe
- Bleeder Pipe



1 inch = 140 feet